

eSATA PVR Guide

1. GETTING READY

Please follow below steps to get ready for recording function.

■ Preparation

This function works with external HDD with Serial ATA interface (eSATA HDD).

■ Connecting eSATA HDD to the Set Top Box

- 1) Ensure the power of both devices are turned off
- 2) Connect STB and eSATA HDD with eSATA Cable
- 3) Turn on the eSATA HDD
- 4) Turn on the STB

■ Formatting eSATA HDD with HDD Manager

HDD manager



HDD information



Format confirmation message box



Format complete



2. RECORDING

- 1) Press **REC** button on RCU.
- 2) Recording will be started with tiny message box on upper right side displaying recording time & channel name.
- 3) To stop recording, press **STOP** button on RCU.



- 4) **BACKGROUND RECORDING** : You can switch to other channel to watch it while recording (recording channel and watching channel should belong to same TP)
- 5) As you try to move channel in different TP, recording could be stopped with confirmation message box.



Recording CH : Luxe-TV-HD

Live Viewing CH : RAI Interna

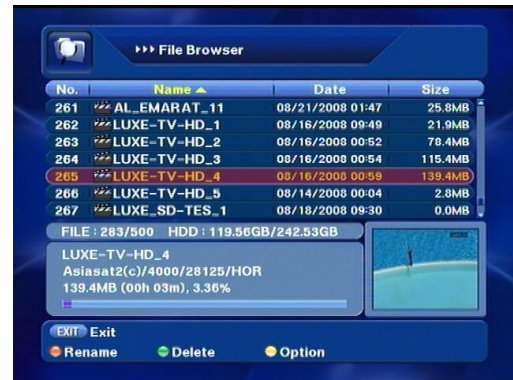
3. PLAY BACK

- 1) To browse recorded files in HDD, go to FILE MANAGER MENU.
- 2) Selecting one of them, small preview window opened and play automatically.

Select "File Browser"



Recorded file lists



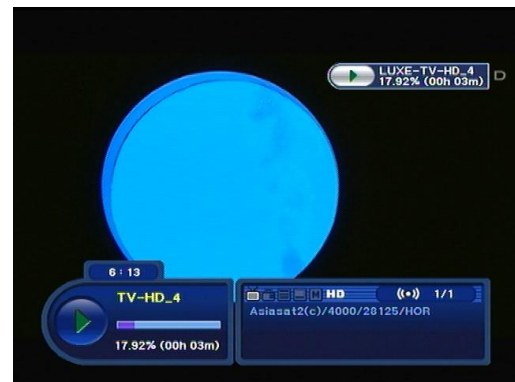
Small window preview

Rename, Delete, Sort option available

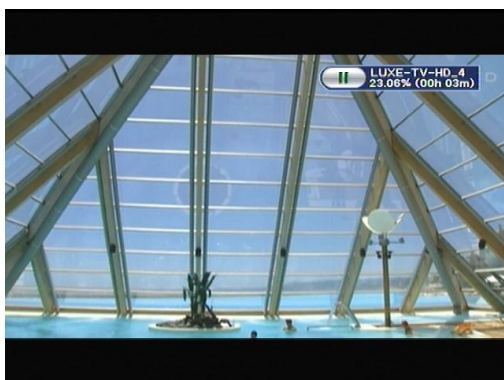
- 3) For full screen playback, press OK button on RCU
- 4) For playback information, press **i** button on RCU



full screen playback



playback information



Pause by **||** button



2X speed playback by **▶▶** button

- 5) PLAYBACK while RECORDING: You can playback recorded file while recording live channel.

Start recording and then follow No.3 PLAYBACK procedure



Playback file : LUXE-TV-HD_2

Recording channel : LUXE-TV-HD